

# Double Insulated Wire

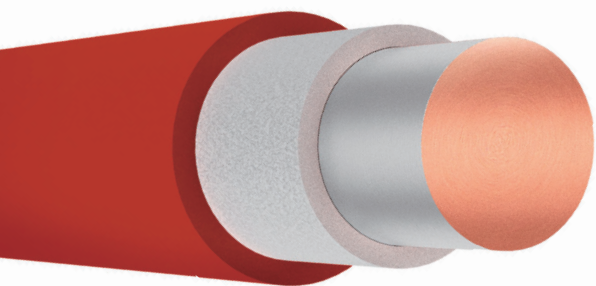
**RUBADUE WIRE MANUFACTURES SEVERAL DOUBLE INSULATED WIRES TO BE USED IN SUPPLEMENTARY ISOLATION APPLICATIONS.**

Double insulated wires can be used to meet several design requirements:

- Wind bobbin wall to wall
- Meet creepage and clearance requirements
- High voltage
- Applications requiring supplementary isolation
- Leakage or loss reduction
- Reduced space, volume, weight
- Increased safety
- High speed winding capable

Double insulated wires can be manufactured in a variety of types, sizes, insulations, ratings, and colors.

Double Insulated  
PFA .003" / Layer



**Chemours Tefzel® ETFE:** Fluoropolymer compound with excellent electrical properties, heat resistance, chemical resistance, and abrasion resistance.

**TCA - MODIFIED ETFE:** Designed for more economical /efficient manufacturing. Comes standard in one color, most sizes readily available.

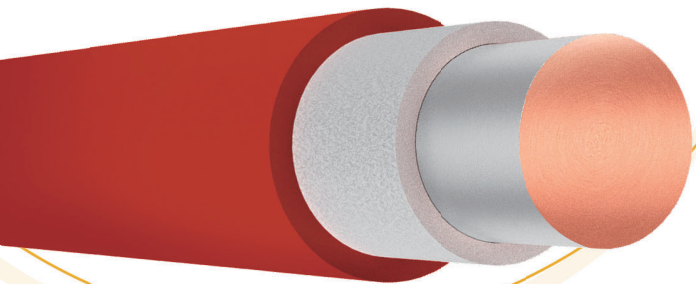
**CHEMOURS TEFLON® FEP:** Fluoropolymer compound with exceptional dielectric properties, heat resistance, chemical resistance, and flexibility.

**CHEMOURS TEFLON® PFA:** Fluoropolymer compound with superior heat resistance, exceptional dielectric properties, and chemical resistance.



# Double Insulated

Chemours  
TEFZEL® ETFE .001"/LAYER



## Product Construction:

**SIZE RANGE:** 30 AWG - 40 AWG

### CONDUCTOR:

Tin plated copper  
Solid or stranded (ASTM B-33/ASTM B-286)  
Bare copper and other conductors available

**INSULATIONS:** Chemours Tefzel® ETFE

**RATING:** TEMPERATURE: 155°C | VOLTAGE: 600 Vpk

### APPLICATIONS:

Thinnest DIW on the market  
Size/Safety critical supplementary isolation  
Telecom

### COMPLIANCES:

UL OBJT2 File No. E206198  
UL/IEC 62368-1, Annex J

**SYSTEM APPROVALS:** UL 1446

- RXT-2 Class F
- TCA Class F
- Other systems available upon request

RoHS Compliant

**TENSILE STRENGTH:** 6500 psi

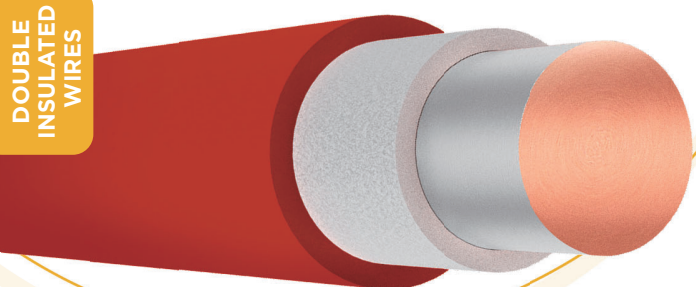
**BREAKDOWN:** Approx. 3000 V

PART NUMBER	AWG	CONDUCTOR		NOMINAL O.D.		WEIGHT LB/KFT
		INCHES	MM	INCHES	MM	
D30A01TXX-1	30	0.0100	0.254	0.0140	0.356	0.36
D31A01TXX-1	31	0.0089	0.226	0.0129	0.328	0.29
D32A01TXX-1	32	0.0080	0.203	0.0120	0.305	0.24
D33A01TXX-1	33	0.0071	0.180	0.0111	0.282	0.20
D34A01TXX-1	34	0.0063	0.160	0.0103	0.262	0.16
D35A01TXX-1	35	0.0056	0.142	0.0096	0.244	0.13
D36A01TXX-1	36	0.0050	0.127	0.0090	0.229	0.11
D37A01TXX-1	37	0.0045	0.114	0.0085	0.216	0.09
D38A01TXX-1	38	0.0040	0.102	0.0080	0.203	0.08
D39A01TXX-1	39	0.0035	0.089	0.0075	0.191	0.06
D40A01TXX-1	40	0.0031	0.079	0.0071	0.180	0.05

# Double Insulated

Chemours  
**TEFZEL® ETFE .0015"/LAYER**

DOUBLE INSULATED WIRES



## Product Construction:

**SIZE RANGE:** UL: 16 AWG - 40 AWG, VDE: 14 AWG - 40 AWG

Not all sizes listed in chart

**CONDUCTOR:** Tin plated copper  
Solid or stranded (ASTM B-33/ASTM B-286)  
Bare copper and other conductors available

**INSULATIONS:** Chemours Tefzel® ETFE

**RATING:** TEMPERATURE: 155°C | VOLTAGE: 600 Vpk

### APPLICATIONS:

Telecom/Electronic  
Supplementary isolation applications

### COMPLIANCES:

UL OBJT2 File No. E206198  
UL/IEC 60950-1 (Ed. 2)am;1, Annex U  
IEC 61558-2-16  
VDE License Nr. 136743: Class F  
**SYSTEM APPROVALS:** UL 1446  
• RXT-2 Class F  
• TCA Class F  
• Other systems available upon request  
RoHS Compliant

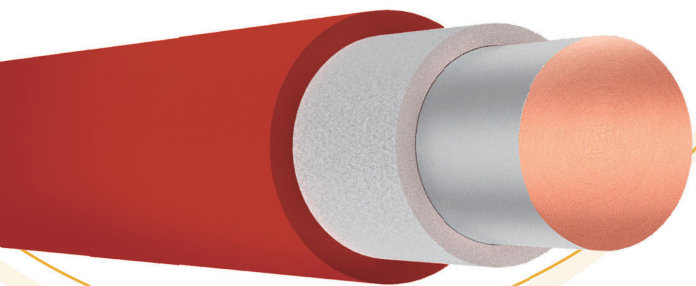
**TENSILE STRENGTH:** 6500 psi

**BREAKDOWN:** Approx. 4500 V

PART NUMBER	AWG	CONDUCTOR		NOMINAL O.D.		WEIGHT LB/KFT
		INCHES	MM	INCHES	MM	
D18A01TXX-1.5	18	0.0403	1.024	0.0463	1.176	5.22
D19A01TXX-1.5	19	0.0359	0.912	0.0419	1.064	4.17
D20A01TXX-1.5	20	0.0320	0.813	0.0380	0.965	3.33
D21A01TXX-1.5	21	0.0285	0.724	0.0345	0.876	2.68
D22A01TXX-1.5	22	0.0253	0.643	0.0313	0.795	2.14
D23A01TXX-1.5	23	0.0226	0.574	0.0286	0.726	1.73
D24A01TXX-1.5	24	0.0201	0.511	0.0261	0.663	1.38
D25A01TXX-1.5	25	0.0179	0.455	0.0239	0.607	1.12
D26A01TXX-1.5	26	0.0159	0.404	0.0219	0.556	0.90
D27A01TXX-1.5	27	0.0142	0.361	0.0202	0.513	0.73
D28A01TXX-1.5	28	0.0126	0.320	0.0186	0.472	0.59
D29A01TXX-1.5	29	0.0113	0.287	0.0173	0.439	0.49
D30A01TXX-1.5	30	0.0100	0.254	0.0160	0.406	0.39
D31A01TXX-1.5	31	0.0089	0.226	0.0149	0.378	0.32
D32A01TXX-1.5	32	0.0080	0.203	0.0140	0.356	0.27
D33A01TXX-1.5	33	0.0071	0.180	0.0131	0.333	0.22
D34A01TXX-1.5	34	0.0063	0.160	0.0123	0.312	0.18
D35A01TXX-1.5	35	0.0056	0.142	0.0116	0.295	0.15
D36A01TXX-1.5	36	0.0050	0.127	0.0110	0.279	0.13
D37A01TXX-1.5	37	0.0045	0.114	0.0105	0.267	0.11
D38A01TXX-1.5	38	0.0040	0.102	0.0100	0.254	0.10
D39A01TXX-1.5	39	0.0035	0.089	0.0095	0.241	0.08
D40A01TXX-1.5	40	0.0031	0.079	0.0091	0.231	0.07

# Double Insulated

Chemours  
**TEFZEL® ETFE .002"/LAYER**



## Product Construction:

**SIZE RANGE:** UL: 16 AWG - 38 AWG, VDE: 14 AWG - 38 AWG  
Not all sizes listed in chart

**CONDUCTOR:** Tin plated copper  
Solid or stranded (ASTM B-33/ASTM B-286)  
Bare copper and other conductors available

**INSULATIONS:** Chemours Tefzel® ETFE

**RATING:** TEMPERATURE: 155°C | VOLTAGE: 600 Vpk

### APPLICATIONS:

Telecom/Electronic  
Supplementary isolation applications

### COMPLIANCES:

UL OBJT2 File No. E206198  
UL/IEC 60950-1 (Ed. 2), Annex U  
IEC 61558-2-16  
VDE License Nr. 136743: Class F

### SYSTEM APPROVALS:

- UL 1446
- RXT-2 Class F
- TCA Class F
- Other systems available upon request

RoHS Compliant

**TENSILE STRENGTH:** 6500 psi

**BREAKDOWN:** Approx. 6000 V

PART NUMBER	AWG	CONDUCTOR		NOMINAL O.D.		WEIGHT LB/KFT
		INCHES	MM	INCHES	MM	
D18A01TXX-2	18	0.0403	1.024	0.0483	1.227	5.33
D19A01TXX-2	19	0.0359	0.912	0.0439	1.115	4.27
D20A01TXX-2	20	0.0320	0.813	0.0400	1.016	3.43
D21A01TXX-2	21	0.0285	0.724	0.0365	0.927	2.76
D22A01TXX-2	22	0.0253	0.643	0.0333	0.846	2.21
D23A01TXX-2	23	0.0226	0.574	0.0306	0.777	1.79
D24A01TXX-2	24	0.0201	0.511	0.0281	0.714	1.45
D25A01TXX-2	25	0.0179	0.455	0.0259	0.658	1.17
D26A01TXX-2	26	0.0159	0.404	0.0239	0.607	0.95
D27A01TXX-2	27	0.0142	0.361	0.0222	0.564	0.78
D28A01TXX-2	28	0.0126	0.320	0.0206	0.523	0.63
D29A01TXX-2	29	0.0113	0.287	0.0193	0.490	0.53
D30A01TXX-2	30	0.0100	0.254	0.0180	0.457	0.43
D31A01TXX-2	31	0.0089	0.226	0.0169	0.429	0.36
D32A01TXX-2	32	0.0080	0.203	0.0160	0.406	0.30
D33A01TXX-2	33	0.0071	0.180	0.0151	0.384	0.26
D34A01TXX-2	34	0.0063	0.160	0.0143	0.363	0.22
D35A01TXX-2	35	0.0056	0.142	0.0136	0.345	0.18
D36A01TXX-2	36	0.0050	0.127	0.0130	0.330	0.16
D37A01TXX-2	37	0.0045	0.114	0.0125	0.318	0.14
D38A01TXX-2	38	0.0040	0.102	0.0120	0.305	0.12

DOUBLE INSULATED WIRES

# Double Insulated

Chemours  
Tefzel® ETFE .003"/Layer

DOUBLE INSULATED WIRES



## Product Construction:

**SIZE RANGE:** UL: 10 AWG - 40 AWG, VDE: 14 AWG - 40 AWG  
Not all sizes listed in chart

**CONDUCTOR:** Tin plated copper  
Solid or stranded (ASTM B-33/ASTM B-286)  
Bare copper and other conductors available

**INSULATIONS:** Chemours Tefzel® ETFE

**RATING: TEMPERATURE:** 155°C | **VOLTAGE:** 600Vpk

**APPLICATIONS:** Electronic  
Supplementary isolation applications

### COMPLIANCES:

UL OBJT2 File No. E206198  
UL/IEC 60950-1 (Ed. 2), Annex U  
IEC 61558-2-16  
VDE License Nr. 136743: Class F

**SYSTEM APPROVALS:** UL 1446  
• RXT-2 Class F  
• TCA Class F  
• Other systems available upon request

RoHS Compliant

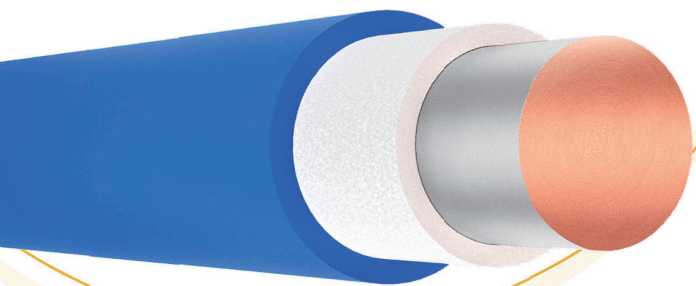
**TENSILE STRENGTH:** 6500 psi

**BREAKDOWN:** Approx. 9000 V

PART NUMBER	AWG	CONDUCTOR		NOMINAL O.D.		WEIGHT LB/KFT
		INCHES	MM	INCHES	MM	
D10A37TXX-3	10(37/26)	0.1070	2.718	0.1190	3.023	30.45
D12A01TXX-3	12	0.0808	2.052	0.0928	2.357	21.01
D12A19TXX-3	12(19/25)	0.0862	2.189	0.0982	2.494	20.08
D14A01TXX-3	14	0.0641	1.628	0.0761	1.933	13.37
D14A19TXX-3	14(19/27)	0.0679	1.725	0.0799	2.029	12.83
D16A01TXX-3	16	0.0508	1.290	0.0628	1.595	8.60
D18A01TXX-3	18	0.0403	1.024	0.0523	1.328	5.56
D20A01TXX-3	20	0.0320	0.813	0.0440	1.118	3.62
D21A01TXX-3	21	0.0285	0.724	0.0405	1.029	2.94
D22A01TXX-3	22	0.0253	0.643	0.0373	0.947	2.37
D23A01TXX-3	23	0.0226	0.574	0.0346	0.879	1.95
D24A01TXX-3	24	0.0201	0.511	0.0321	0.815	1.58
D25A01TXX-3	25	0.0179	0.455	0.0299	0.759	1.30
D26A01TXX-3	26	0.0159	0.404	0.0279	0.709	1.07
D27A01TXX-3	27	0.0142	0.361	0.0262	0.665	0.89
D28A01TXX-3	28	0.0126	0.320	0.0246	0.625	0.74
D29A01TXX-3	29	0.0113	0.287	0.0233	0.592	0.63
D30A01TXX-3	30	0.0100	0.254	0.0220	0.559	0.53
D31A01TXX-3	31	0.0089	0.226	0.0209	0.531	0.45
D32A01TXX-3	32	0.0080	0.203	0.0200	0.508	0.39

# Double Insulated

## TCA2



### Product Construction:

**SIZE RANGE:** UL: 16 AWG - 40 AWG, VDE: 14 AWG - 40 AWG  
Not all sizes listed in chart

**CONDUCTOR:** Tin plated copper  
Solid or stranded (ASTM B-33/ASTM B-286)  
Bare copper and other conductors available

**INSULATIONS:** Modified ETFE

**RATING: TEMPERATURE:** 155°C | **VOLTAGE:** 600 Vpk

**APPLICATIONS:** Telecom/Electronic  
Supplementary isolation applications  
Medical/Dental

### COMPLIANCES:

UL OBJT2 File No. E206198  
UL/IEC 60950-1 (Ed. 2), Annex U  
IEC 61558-2-16  
VDE License Nr. 40000223: Class F

### SYSTEM APPROVALS:

- RXT-2 Class F
  - TCA Class F
  - Other systems available upon request
- RoHS Compliant

**TENSILE STRENGTH:** 6500 psi

**BREAKDOWN:** Approx. 4500 V

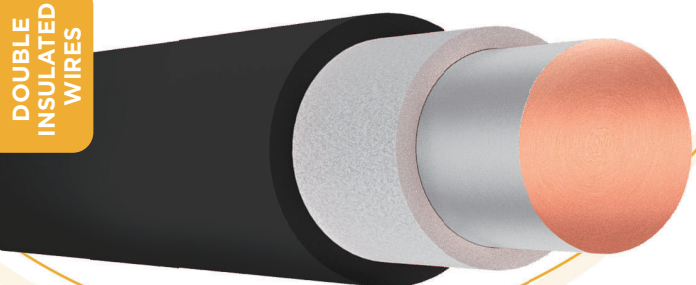
TCA2 products come standard in Blue

PART NUMBER	AWG	CONDUCTOR		NOMINAL O.D.		WEIGHT LB/KFT
		INCHES	MM	INCHES	MM	
TCA2 18 AWG	18	0.0403	1.024	0.0463	1.176	5.22
TCA2 19 AWG	19	0.0359	0.912	0.0419	1.064	4.17
TCA2 20 AWG	20	0.032	0.813	0.0380	0.965	3.33
TCA2 21 AWG	21	0.0285	0.724	0.0345	0.876	2.68
TCA2 22 AWG	22	0.0253	0.643	0.0313	0.795	2.14
TCA2 23 AWG	23	0.0226	0.574	0.0286	0.726	1.73
TCA2 24 AWG	24	0.0201	0.511	0.0261	0.663	1.38
TCA2 25 AWG	25	0.0179	0.455	0.0239	0.607	1.12
TCA2 26 AWG	26	0.0159	0.404	0.0219	0.556	0.90
TCA2 27 AWG	27	0.0142	0.361	0.0202	0.513	0.73
TCA2 28 AWG	28	0.0126	0.320	0.0186	0.472	0.59
TCA2 29 AWG	29	0.0113	0.287	0.0173	0.439	0.49
TCA2 30 AWG	30	0.0100	0.254	0.0160	0.406	0.39
TCA2 31 AWG	31	0.0089	0.226	0.0149	0.378	0.32
TCA2 32 AWG	32	0.0080	0.203	0.0140	0.356	0.27
TCA2 33 AWG	33	0.0071	0.180	0.0121	0.307	0.23
TCA2 34 AWG	34	0.0063	0.160	0.0113	0.287	0.19
TCA2 35 AWG	35	0.0056	0.142	0.0106	0.269	0.16
TCA2 36 AWG	36	0.0050	0.127	0.0100	0.254	0.13
TCA2 37 AWG	37	0.0045	0.114	0.0095	0.241	0.11
TCA2 38 AWG	38	0.0040	0.102	0.0090	0.229	0.10
TCA2 39 AWG	39	0.0035	0.089	0.0085	0.216	0.08
TCA2 40 AWG	40	0.0031	0.079	0.0081	0.206	0.07

# Double Insulated

FEP .002"/LAYER

DOUBLE INSULATED WIRES



## Product Construction:

**SIZE RANGE:** 10 AWG - 38 AWG

Not all sizes listed in chart

**CONDUCTOR:** Tin plated copper  
Solid or stranded (ASTM B-33/ASTM B-286)  
Bare copper and other conductors available

**INSULATIONS:** FEP

**RATING:** TEMPERATURE: 155°C | VOLTAGE: 600 Vpk

## APPLICATIONS:

Telecom/Electronic  
Supplementary isolation applications

## COMPLIANCES:

UL OBJT2 File No. E206198  
UL/IEC 60950-1 (Ed. 2), Annex U  
VDE License Nr. 6715: Class F

## SYSTEM APPROVALS:

- UL 1446
  - RXT-2 Class F
  - TCA Class F
  - Other systems available upon request
- RoHS Compliant

**TENSILE STRENGTH:** 3000 psi

**BREAKDOWN:** Approx. 6000 V

PART NUMBER	AWG	CONDUCTOR		NOMINAL O.D.		WEIGHT LB/KFT
		INCHES	MM	INCHES	MM	
D18A01FXX-2	18	0.0403	1.024	0.0483	1.227	5.45
D18A19FXX-2	18(19/30)	0.0476	1.209	0.0556	1.412	6.49
D20A01FXX-2	20	0.0320	0.813	0.0400	1.016	3.52
D20A19FXX-2	20(19/32)	0.0385	0.978	0.0465	1.181	4.26
D22A01FXX-2	22	0.0253	0.643	0.0333	0.846	2.29
D22A19FXX-2	22(19/34)	0.0295	0.749	0.0375	0.953	2.73
D24A01FXX-2	24	0.0201	0.511	0.0281	0.714	1.51
D24A19FXX-2	24(19/36)	0.0242	0.615	0.0322	0.818	1.81
D25A01FXX-2	25	0.0179	0.455	0.0259	0.658	1.23
D26A01FXX-2	26	0.0159	0.403	0.0239	0.607	1.04
D27A01FXX-2	27	0.0142	0.361	0.0222	0.564	0.83
D28A01FXX-2	28	0.0126	0.320	0.0206	0.523	0.68
D29A01FXX-2	29	0.0113	0.287	0.0193	0.490	0.57
D30A01FXX-2	30	0.0100	0.254	0.0180	0.457	0.47
D31A01FXX-2	31	0.0089	0.226	0.0169	0.429	0.39
D32A01FXX-2	32	0.0080	0.203	0.0160	0.406	0.34
D33A01FXX-2	33	0.0071	0.180	0.0151	0.384	0.29
D34A01FXX-2	34	0.0063	0.160	0.0143	0.363	0.24
D35A01FXX-2	35	0.0056	0.142	0.0136	0.345	0.21
D36A01FXX-2	36	0.0050	0.127	0.0130	0.330	0.18
D37A01FXX-2	37	0.0045	0.114	0.0125	0.318	0.16
D38A01FXX-2	38	0.0040	0.102	0.0120	0.305	0.14

# Double Insulated

FEP .003"/LAYER



## Product Construction:

**SIZE RANGE:** 10 AWG - 36 AWG

Not all sizes listed in chart

**CONDUCTOR:** Tin plated copper  
Solid or stranded (ASTM B-33/ASTM B-286)  
Bare copper and other conductors available

**INSULATIONS:** FEP

**RATING:** TEMPERATURE: 155°C | VOLTAGE: 600 Vpk

## APPLICATIONS:

Telecom/ Electronic  
Supplementary isolation applications

## COMPLIANCES:

UL OBJT2 File No. E206198  
UL/IEC 60950-1 (Ed. 2), Annex U  
VDE License Nr. 6715: Class F

**SYSTEM APPROVALS:** UL 1446

- RXT-2 Class F
- TCA Class F
- Other systems available upon request

RoHS Compliant

**TENSILE STRENGTH:** 3000 psi

**BREAKDOWN:** Approx. 9000 V

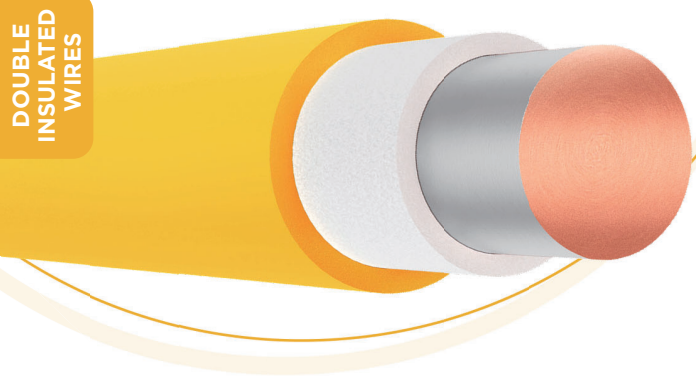
DOUBLE  
INSULATED  
WIRES

PART NUMBER	AWG	CONDUCTOR		NOMINAL O.D.		WEIGHT LB/KFT
		INCHES	MM	INCHES	MM	
D10A37FXX-3	10(37/26)	0.1070	2.718	0.1190	3.023	30.91
D12A01FXX-3	12	0.0808	2.052	0.0928	2.357	21.36
D12A19FXX-3	12(19/25)	0.0862	2.189	0.0982	2.494	20.46
D14A01FXX-3	14	0.0641	1.628	0.0761	1.933	13.66
D14A19FXX-3	14(19/27)	0.0679	1.725	0.0799	2.029	13.13
D16A01FXX-3	16	0.0508	1.290	0.0628	1.595	8.83
D16A19FXX-3	16(19/29)	0.0539	1.369	0.0659	1.674	8.57
D18A01FXX-3	18	0.0403	1.024	0.0523	1.328	5.75
D18A19FXX-3	18(19/30)	0.0476	1.209	0.0596	1.514	6.83
D20A01FXX-3	20	0.0320	0.813	0.0440	1.118	3.77
D20A19FXX-3	20(19/32)	0.0385	0.978	0.0505	1.283	4.55
D22A01FXX-3	22	0.0253	0.643	0.0373	0.947	2.50
D22A19FXX-3	22(19/34)	0.0295	0.749	0.0415	1.054	2.97
D24A01FXX-3	24	0.0201	0.511	0.0321	0.815	1.69
D24A19FXX-3	24(19/36)	0.0242	0.615	0.0362	0.919	2.01
D26A01FXX-3	26	0.0159	0.404	0.0279	0.709	1.16
D26A19FXX-3	26(19/38)	0.0190	0.483	0.0310	0.787	1.34
D28A01FXX-3	28	0.0126	0.320	0.0246	0.625	0.82
D28A19FXX-3	28(19/40)	0.0152	0.386	0.0272	0.691	0.95
D30A01FXX-3	30	0.0100	0.254	0.0220	0.559	0.59
D32A01FXX-3	32	0.0080	0.203	0.0200	0.508	0.45



# Double Insulated

**PFA .0015"/LAYER**



## Product Construction:

**SIZE RANGE:** 18 AWG - 40 AWG

**CONDUCTOR:** Tin plated copper  
Solid or stranded (ASTM B-33/ASTM B-286)  
Bare copper and other conductors available

**INSULATIONS:** PFA

**RATING:** TEMPERATURE: 180°C | VOLTAGE: 600 Vpk

## APPLICATIONS:

Telecom/Electronic  
Supplementary isolation applications  
High temperature capacity (260°C)

## COMPLIANCES:

UL OBJT2 File No. E206198  
UL/IEC 60950-1 (Ed. 2), Annex U  
IEC 61558-2-16  
VDE License Nr. 6716: Class H  
**SYSTEM APPROVALS:** UL 1446  
• Other systems available upon request  
RoHS Compliant

**TENSILE STRENGTH:** 3500 psi

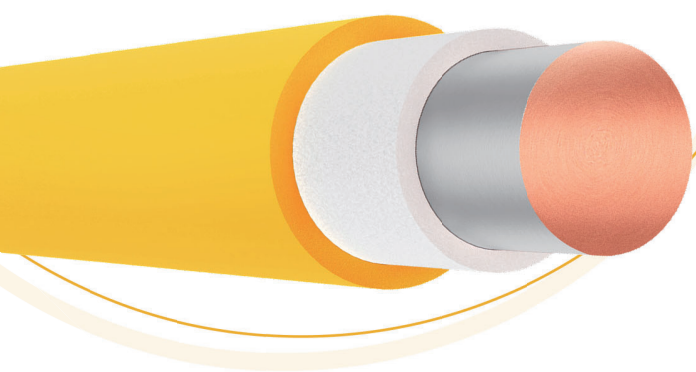
**BREAKDOWN:** Approx. 6000 V

**INSULATION TEMPERATURE CAPACITY:** 260°C

PART NUMBER	AWG	CONDUCTOR		NOMINAL O.D.		WEIGHT LB/KFT
		INCHES	MM	INCHES	MM	
D18A01PXX-1.5	18	0.0403	1.024	0.0463	1.176	5.31
D19A01PXX-1.5	19	0.0359	0.912	0.0419	1.064	4.25
D20A01PXX-1.5	20	0.0320	0.813	0.0380	0.965	3.41
D21A01PXX-1.5	21	0.0285	0.724	0.0345	0.876	2.74
D22A01PXX-1.5	22	0.0253	0.643	0.0313	0.795	2.19
D23A01PXX-1.5	23	0.0226	0.574	0.0286	0.726	1.78
D24A01PXX-1.5	24	0.0201	0.511	0.0261	0.663	1.43
D25A01PXX-1.5	25	0.0179	0.455	0.0239	0.607	1.16
D26A01PXX-1.5	26	0.0159	0.404	0.0219	0.556	0.94
D27A01PXX-1.5	27	0.0142	0.361	0.0202	0.513	0.76
D28A01PXX-1.5	28	0.0126	0.320	0.0186	0.472	0.62
D29A01PXX-1.5	29	0.0113	0.287	0.0173	0.439	0.52
D30A01PXX-1.5	30	0.0100	0.254	0.0160	0.406	0.42
D31A01PXX-1.5	31	0.0089	0.226	0.0149	0.378	0.35
D32A01PXX-1.5	32	0.0080	0.203	0.0140	0.356	0.29
D33A01PXX-1.5	33	0.0071	0.180	0.0131	0.333	0.24
D34A01PXX-1.5	34	0.0063	0.160	0.0123	0.312	0.20
D35A01PXX-1.5	35	0.0056	0.142	0.0116	0.295	0.17
D36A01PXX-1.5	36	0.0050	0.127	0.0110	0.279	0.15
D37A01PXX-1.5	37	0.0045	0.114	0.0105	0.267	0.13
D38A01PXX-1.5	38	0.0040	0.102	0.0100	0.254	0.11
D39A01PXX-1.5	39	0.0035	0.089	0.0095	0.241	0.09
D40A01PXX-1.5	40	0.0031	0.079	0.0091	0.231	0.08

# Double Insulated

**PFA .002"/LAYER**



## Product Construction:

**SIZE RANGE:** UL: 18 AWG - 38 AWG

VDE: 14 AWG - 38 AWG

Not all sizes listed in chart

**CONDUCTOR:** Tin plated copper

Solid or stranded (ASTM B-33/ASTM B-286)

Bare copper and other conductors available

**INSULATIONS:** PFA

**RATING:** TEMPERATURE: 180°C | VOLTAGE: 600 Vpk

## APPLICATIONS:

Telecom/Electronic

Supplementary isolation applications

High temperature capacity (260°C)

## COMPLIANCES:

UL OBJT2 File No. E206198

UL/IEC 60950-1 (Ed. 2), Annex U

IEC 61558-2-16

VDE License Nr. 6716: Class H

RoHS Compliant

**SYSTEM APPROVALS:** UL 1446

Information provided upon request

**TENSILE STRENGTH:** 3500 psi

**BREAKDOWN:** Approx. 8000 V

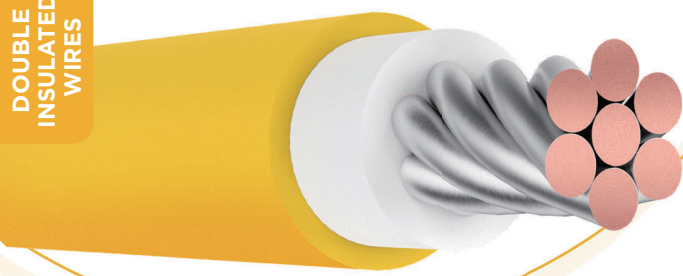
**INSULATION TEMPERATURE CAPACITY:** 260° C

PART NUMBER	AWG	CONDUCTOR		NOMINAL O.D.		WEIGHT LB/KFT
		INCHES	MM	INCHES	MM	
D18A01PXX-2	18	0.0403	1.024	0.0483	1.227	5.45
D19A01PXX-2	19	0.0359	0.912	0.0439	1.115	4.38
D20A01PXX-2	20	0.0320	0.813	0.0400	1.016	3.52
D21A01PXX-2	21	0.0285	0.724	0.0365	0.927	2.85
D22A01PXX-2	22	0.0253	0.643	0.0333	0.846	2.29
D23A01PXX-2	23	0.0226	0.574	0.0306	0.777	1.87
D24A01PXX-2	24	0.0201	0.511	0.0281	0.714	1.51
D25A01PXX-2	25	0.0179	0.455	0.0259	0.658	1.23
D26A01PXX-2	26	0.0159	0.404	0.0239	0.607	1.00
D27A01PXX-2	27	0.0142	0.361	0.0222	0.564	0.83
D28A01PXX-2	28	0.0126	0.320	0.0206	0.523	0.68
D29A01PXX-2	29	0.0113	0.287	0.0193	0.490	0.57
D30A01PXX-2	30	0.0100	0.254	0.0180	0.457	0.47
D31A01PXX-2	31	0.0089	0.226	0.0169	0.429	0.39
D32A01PXX-2	32	0.0080	0.203	0.0160	0.406	0.34
D33A01PXX-2	33	0.0071	0.180	0.0151	0.384	0.29
D34A01PXX-2	34	0.0063	0.160	0.0143	0.363	0.24
D35A01PXX-2	35	0.0056	0.142	0.0136	0.345	0.21
D36A01PXX-2	36	0.0050	0.127	0.0130	0.330	0.18
D37A01PXX-2	37	0.0045	0.114	0.0125	0.318	0.16
D38A01PXX-2	38	0.0040	0.102	0.0120	0.305	0.14

# Double Insulated

**PFA .003"/LAYER**

DOUBLE INSULATED WIRES



## Product Construction:

**SIZE RANGE:** UL: 18 AWG - 36 AWG

VDE: 14 AWG - 36 AWG

Not all sizes listed in chart

**CONDUCTOR:** Tin plated copper

Solid or stranded (ASTM B-33/ASTM B-286)

Bare copper and other conductors available

**INSULATIONS:** PFA

**RATING:** TEMPERATURE: 180°C | VOLTAGE: 600 Vpk

## APPLICATIONS:

Telecom/Electronic

Supplementary isolation applications

High temperature capacity (260°C)

## COMPLIANCES:

UL OBJT2 File No. E206198

UL/IEC 60950-1 (Ed. 2), Annex U

IEC 61558-2-16

VDE License Nr. 6716: Class H

RoHS Compliant

**SYSTEM APPROVALS:** UL 1446

Information provided upon request

**TENSILE STRENGTH:** 3500 psi

**BREAKDOWN:** Approx. 10000 V

**INSULATION TEMPERATURE CAPACITY:** 260° C

PART NUMBER	AWG	CONDUCTOR		NOMINAL O.D.		WEIGHT LB/KFT
		INCHES	MM	INCHES	MM	
D18A01PXX-3	18	0.0403	1.024	0.0523	1.328	5.75
D19A01PXX-3	19	0.0359	0.912	0.0479	1.217	4.65
D20A01PXX-3	20	0.032	0.813	0.0440	1.118	3.77
D21A01PXX-3	21	0.0285	0.724	0.0405	1.029	3.08
D22A01PXX-3	22	0.0253	0.643	0.0373	0.947	2.50
D23A01PXX-3	23	0.0226	0.574	0.0346	0.879	2.06
D24A01PXX-3	24	0.0201	0.511	0.0321	0.815	1.69
D25A01PXX-3	25	0.0179	0.455	0.0299	0.759	1.40
D26A01PXX-3	26	0.0159	0.404	0.0279	0.709	1.16
D27A01PXX-3	27	0.0142	0.361	0.0262	0.665	0.97
D28A01PXX-3	28	0.0126	0.320	0.0246	0.625	0.82
D29A01PXX-3	29	0.0113	0.287	0.0233	0.592	0.70
D30A01PXX-3	30	0.0100	0.254	0.0220	0.559	0.59
D31A01PXX-3	31	0.0089	0.226	0.0209	0.531	0.51
D32A01PXX-3	32	0.0080	0.203	0.0200	0.508	0.45
D33A01PXX-3	33	0.0071	0.180	0.0191	0.485	0.39
D34A01PXX-3	34	0.0063	0.160	0.0183	0.465	0.34
D35A01PXX-3	35	0.0056	0.142	0.0176	0.447	0.30
D36A01PXX-3	36	0.0050	0.127	0.0170	x0.432	0.27